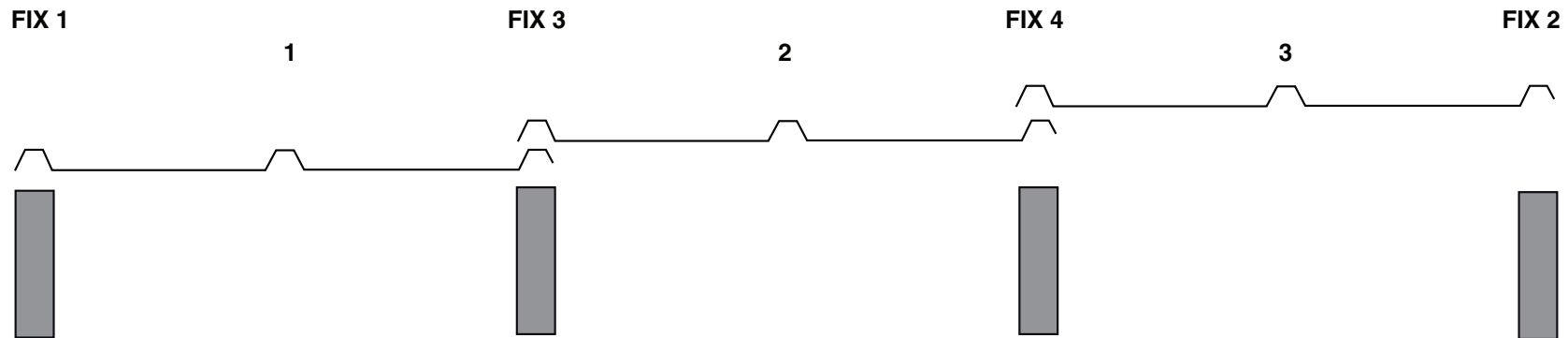
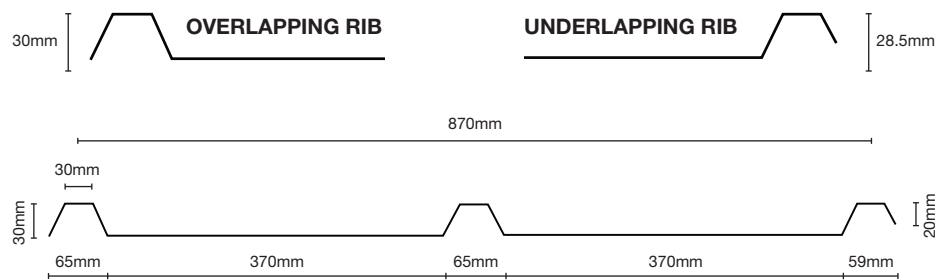


# CUSTOM GLAZE

## Assembly and Installation Procedures

Care must be taken when installing Custom Glaze. Please read the following installation instructions to avoid disappointment.

Custom Glaze Polycarbonate sheeting has an overlapping rib and an underlapping rib. Overlapping rib height is 30mm, underlapping rib is 28.5mm (effective cover is .870mm)



1. Lay the first sheet so the first rib is dead centre on the purlin. Fix the first rib being the 30mm overlapping rib only.
2. Lay the 3rd sheet on the 4th purlin and secure the underlapping 28.5mm rib only.
3. Insert the middle sheet and fix. Sheets will be a good tight fit and will ensure the pans remain flat. Fix as over sheet number 1 underlap rib and fix under sheet number 3 overlapping rib.
4. Continue on using this procedure with the next 3 sheets as this fix method will ensure all overlapping ribs are effectively hidden above the purlins.

ALSYNITE HEAD OFFICE: Freephone 0800 257 964  
Hamilton 07 850 5088

DISTRIBUTION CENTRES: Palmerston North 06 356 5384  
Christchurch 03 348 3375  
Invercargill 03 214 6002